

COVID 19

What you must do

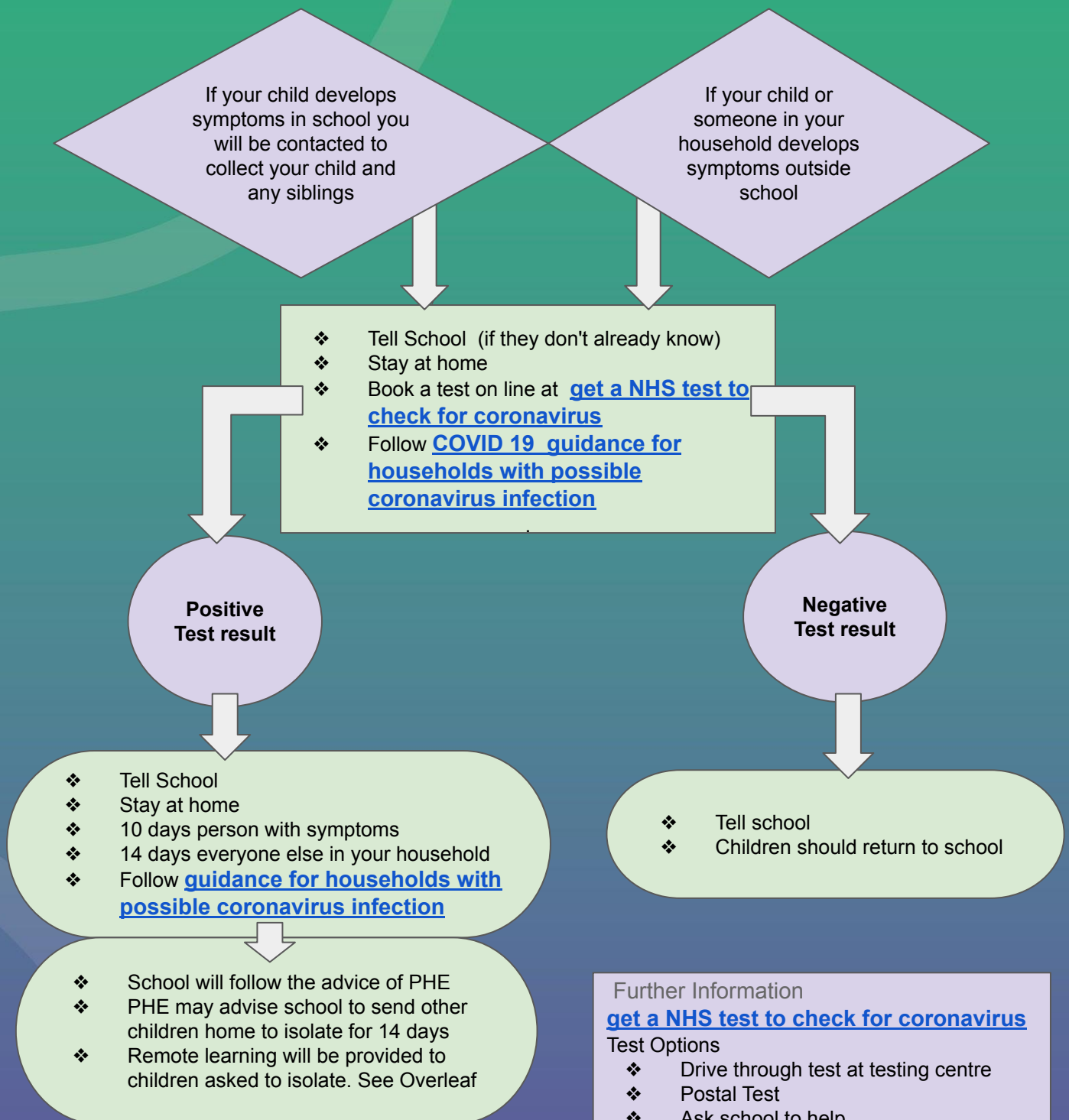
Symptoms

- high temperature,
- repeated and persistent cough,
- loss of smell or taste.

For more information go to

<https://www.nhs.uk/conditions/coronavirus-covid-19/symptoms/coronavirus-in-children/>

**Do not send your child to school
if they or anyone in your household have symptoms of COVID 19**



Further Information

[get a NHS test to check for coronavirus](#)

Test Options

- ❖ Drive through test at testing centre
- ❖ Postal Test
- ❖ Ask school to help

See overleaf for more detailed information

Getting a test

- Book a test as soon as possible <https://www.gov.uk/get-coronavirus-test>
- Order a home test kit if you can not get to a test site <https://www.gov.uk/get-coronavirus-test>
- If you are ordering a home test kit do it by 3pm
- **IF YOU NEED SUPPORT ORDERING A TEST, YOU MUST SPEAK TO THE SCHOOL**

Test Centre

You can get a test at a walk- in centre or by booking a test through the [NHS website](#)

You should avoid using public transport if you, or your child, are displaying symptoms of Coronavirus

Home Tests

- **YOU CAN ORDER A HOME TEST VIA** <https://www.gov.uk/get-coronavirus-test>
- **Guidance** on taking a home test is **included with the test**
- The test involves taking a swab of the inside of your nose and the back of your throat using a long cotton bud.
- Primary School children **must not** take the test themselves. It must be taken by a **parent, guardian or trusted adult.**
- **POST YOUR TEST IN A PRIORITY POSTBOX IF YOU CAN.** These have an NHS sticker on them: outside Pete's Pan/ Braceby Avenue/ outside Sweet Chillies restaurant/ Hullbrook Road.

must **NOT** return to school until

unless they have had a **negative** test

REMOTE ACCESS LEARNING